

Rattlewood Farms Hunter/Jumper Show Series

Presented by Matador Farm

**June 13-15, July 17-20, August 14-17,
September 13-14, October 11-12, 2025**

Featuring over \$4,000 in Prize Money at Each Show!

**Rattlewood Farms
1785 Delano Rd.
Oxford, MI 48371**

Enter online at www.horsespot.net or print and mail entries to:

**Kelsy Eastman
3610 Delano Rd.
Oxford, MI 48371**



MICHIGAN EQUINE LIABILITY ACT 1994 Public Act No. 351 It is a condition of entry to these shows and the show grounds of Rattlewood Farms in Oxford, MI, that every competitor, owner, handler, trainer, and parent agree to assume the risk of showing at Rattlewood Farms under the Michigan Equine Liability Act. By submitting an entry, a competitor further agrees that they, the owner, handler trainer, parent and anyone associated with exhibiting a horse at the show waives all claims against the show, show management, its employees, the facility, its owners, and employees for any injury to themselves attendants or horses/ponies.

Table of Contents

Page 2	Hunter/Jumper Shows Entry Information & Rules
Page 4	Hunter/Jumper Classes
Page 9-11	2, 3 & 4 Day Show Formats
Page 12	Dressage at Rattlewood
Page 14	Harness Your Equestrian Experience scholarship
Page 15-26	2025 Sponsors

Fees , Deadlines, & Rules

Online entries close Monday prior to show.
Late fees apply to entries received after this deadline.
Please make all checks payable to Matador Farm.

Entry Fees:

Hunter & Eq Classes- \$25.00
Medal & Jumper Classes- \$30
Hunter Classic- \$75.00
2'6" Jumper Derby- \$50.00
3' Jumper Derby- \$80.00
3'6" Jumper Derby-\$120.00
4' Jumper Derby- \$170.00
Gambler's Choice (August) - \$75

Horse Show Fees:

Office Fee- \$30.00
Stall (horse or tack)- \$150
Grounds Fee- \$40.00
Non-Show Fee- \$40
Late Entry Fee- \$20.00
Shavings- \$10.00/bag
Big Shavings- \$14.00/bag

STALL RESERVATIONS

Stall reservations must be made by calling or texting Jessica Filiatrault at 512-585-4048. STALLS ARE LIMITED. Reservations need to be made at least two weeks before the start of the show. Stall fees are \$150.00 per horse or tack stall. Stalls cancelled less than 2 weeks prior to show start will still be charged. Discounted circuit stalls at \$650 will be awarded on a first-come first-served basis if paid by June 15.

GROUPS/HAUL IN RESERVATIONS

Grounds and haul in reservations must be made by calling or texting Jessica Filiatrault at 512-585-4048. Grounds fee is \$40.00 per horse.

GOLF CART RENTALS

Golf carts can be reserved for your stay at Rattlewood Farms by calling Viers Auto Sales at 810-667-5447 or by e-mail at erin@viersautosales.com. Supply is limited so we suggest you call to make your reservation as soon as possible.

FARRIER ON CALL

We will have a farrier on call at all of our Hunter/Jumper Events. Matt King (June, September, October) can be reached at 248-914-6341. Noah Hessenthaler (July, August) can be reached at 947-517-6301

DOGS

Dogs must be on leashes at all times while on the show grounds.

PROTECTIVE HEADGEAR

All riders must wear an ASTM/SEI approved riding helmet while mounted anywhere on the show grounds. Any rider violating this rule will be immediately prohibited from further riding until a helmet is in place. Rattlewood Farms makes no representation or warranty, expressed or implied, about any protective headgear, and cautions riders that serious injury may result despite wearing protective headgear as all equestrian sports involve an intrinsic element of risk.

SCHOOLING

Schooling will be open in the show rings after 12:00 p.m. the day before the show starts.

BEDDING

First bedding is not provided but will be available for purchase. Please order shavings when reserving stalls for with Jessica Filiatrault at 512-585-4048.

PAYMENT

Payment may be made by cash, check, Venmo or credit card. An open check is required to receive a back number but will be returned if an alternate form of payment is used. All checks should be made payable to Matador Farm.

Officials

Judges	Roger Turner	June
	Nerice Gulino	July
	Devin Milan	August
	Linda McRae	September
	Brewster Moore	October
Show Manager	Jessica Filiatrault	512-585-4048
Secretary	Kelsy Eastman	248-310-4731
Ring Starter	Sass Kelly	
Course Designer	Jessica Filiatrault	Oxford, MI

Class Specifications

Each hunter division at the 3 or 4 day shows will consist of 3 hunter over fences classes and one under saddle class. At the 2 day shows, there will be 2 hunter over fences classes and one hunter under saddle.

Equitation championships will not be awarded at each individual show. However, points from each show will accumulate towards the end-of-year Championship and Reserve Championship in each division: Pole Piles, Crosspoles, Beginner, Primary, Intermediate and Open.

Courses will simulate fences found in the hunting field such as, but not limited to, brush wall, in/out, oxer, post and rails, and panels with changes in direction. To be judged on performance, soundness, manners, and way of going. Extreme speed will be penalized. All under saddle and flat classes to be shown at a walk, trot, and canter in both directions with the exception of Pole Piles, which will be shown at walk and trot only. Martingales are not permitted in under saddle or flat classes. No professionals unless otherwise noted. Classes with less than 3 entries may be combined. Placings will be awarded to the top 6 entries in each class. Points awarded for all divisions as follows: 10-6-4-2-1-1/2. Championships will be awarded for each hunter division.

BABY GREEN HUNTER: Fences 2'6" *Sponsored by Oxford Veterinary Hospital*

Open to horses in their first or second year of showing over fences. Professionals permitted.

Baby Green Hunter O/F 2'6"

Baby Green Hunter U/S

May not compete in any class over 2'6"

POLE PILES: Course will consist of poles on the ground. *Sponsored by Turtleview Farm*

Trotting will not be penalized. Open to beginner riders in their first year of showing.

Pole Piles Over Fences and Under Saddle

Pole Piles Equitation Over Fences and on the Flat

Cross entry restricted to Crosspole division.

CROSSPOLE: Fences up to 18" *Sponsored by Complete Automation*

Open to beginner riders in their first or second year of showing who have never competed over fences higher than 2'. Trotting will not be penalized.

Crosspole Hunter Over Fences and Under Saddle

Crosspole Equitation Over Fences and on the Flat

Cross entry restricted to Pole Piles and Beginner divisions.

FUTURE HUNTERS: Fence height 2' *Sponsored by Viers Auto Sales*

Open to all horses in their first year of showing. Professionals permitted.

Future Hunters Over Fences and Under Saddle

Cross entry restricted to Primary or X-Pole division

THOROUGHBRED HUNTER: Fence height 2' or 2'6" *Sponsored by Advantage Equine Agency*

Open to thoroughbred horses. Professionals permitted.

Thoroughbred Hunter Over Fences

Thoroughbred Hunter Under Saddle

MULLIGAN OPEN HUNTER: Fence height 2'6" *Sponsored by JB Equest and Red Well Farm*

Open to all horses and ponies. Professionals permitted.

Mulligan Open Hunter Over Fences

Mulligan Open Hunter Under Saddle

PERFORMANCE HUNTER: Fence height 3' *Sponsored by Fortner Farms*

Open to all eligible horses and riders. Professionals permitted.

Performance Hunter Over Fences

Performance Hunter Under Saddle

BEGINNER JUNIOR/ADULT: Fence height 2' *Sponsored by Tractor Supply Company*

Open to riders who have never competed over fence heights of 2'3".

Beginner Junior/Adult Hunter Over Fences and Under Saddle

Beginner Junior/Adult Equitation Over Fences and on the Flat

Cross entry restricted to X-pole, Future and 2'3" divisions

PRIMARY JUNIOR/ADULT: Fence height 2'3" *Sponsored by Oxford Bank*

Open to riders who have never competed over fence heights of 2'6".

Primary Junior/Adult Hunter Over Fences and Under Saddle

Primary Junior/Adult Equitation Over Fences and on the Flat

Cross entry restricted to 2' or 2'6" divisions

INTERMEDIATE JUNIOR/ADULT: Fence height 2'6" *Sponsored by TBD*

Open to riders who have never competed over fence heights of 2'9"

Intermediate Junior/Adult Hunter Over Fences and Under Saddle

Intermediate Junior/Adult Equitation Over Fences and on the Flat

Cross entry restricted to 2'3" or 2'9" divisions

OPEN JUNIOR/ADULT: Fence height 2'9" *Sponsored by Equine Laundry*

Open to all eligible horses and riders

Open Junior/Adult Hunter Over Fences and Under Saddle

Open Junior/Adult Equitation Over Fences and on the Flat

Cross entry restricted to 2'6" or 3' divisions

RATTLEWOOD FARMS \$1000 HUNTER CLASSIC

*Sponsored by: Dream Big Farm(June), Walkabout Farm(July), Rattlewood Farms(Aug)
Stonebridge Farm(Sept), National Benefit Plans(Oct)*

Two round hunter classic. 10 will return for 2nd round. Three heights available: 2', 2'6" and 3'. Competitors must not have competed more than 3" higher than their declared fence height at the same show. Professionals Permitted with a 2-point handicap. Entry Fee: \$75
Prize Money paid as follows: (1st – 30%, 2nd – 25%, 3rd – 15%, 4th – 12.5%, 5th – 10%, 6th – 7.5%)

Medals *Sponsored by Sporthorse Saddlery*

Points from each medal class will accumulate as follows: 10-6-4-2-1-1/2. Year-end championship prizes will be awarded at the November 2 banquet.

2' Beginner Medal

Open to riders competing in the beginner division at this show.

2'3 Primary Medal

Open to riders competing in the primary division at this show.

2'6 Intermediate Medal

Open to riders competing in the intermediate division at this show.

2'9" Open Medal

Open to riders competing in the open division at this show.

JUMPER DIVISIONS: Each Jumper division will consist of two or four over fences classes. Horse/rider combinations can only compete in up to 3 consecutive divisions at each show. Each horse/rider combination is permitted to enter only 1 Jackpot Jumper Derby class.

CROSSPOLE JUMPERS: Fence height not to exceed 18" *Sponsored by GreenStone Farm Credit*
Open to all horse/rider combinations in their first or second year of showing.

2' JUMPERS: Fence heights 2' *Sponsored by Armada Grain*

Open to all horse/rider combinations who are not competing in fence heights over 2'3"

2'3" JUMPERS: Fence heights 2'3" *Sponsored by Moore Equine*

Open to all horse/rider combinations who are not competing in fence heights over 2'6"

2'6" JUMPERS: Fence heights 2'6" *Sponsored by Absolute Construction*

Open to all horse/rider combinations who are not competing in fence heights over 2'9"

2'9" JUMPERS: Fence heights 2'9" *Sponsored by Thompson's Horseshoeing*
Open to all horse/rider combinations who are not competing in fence heights over 3'

3' JUMPERS: Fence heights 3' *Sponsored by Timber Works Shavings*
Open to all horse/rider combinations who are not competing in fence heights over 3'3"

3'3" JUMPERS: Fence heights 3'3" *Sponsored by Harness Your Equestrian Experience Fund*
Open to all horse/rider combinations who are not competing in fence heights over 3'6"

3'6" JUMPERS: Fence heights 3'6" *Sponsored by The Holbrook Team* Open to all horse/rider combinations who are not competing in fence heights over 3'9"

3'9" JUMPERS: Fence heights 3'9" *Sponsored by Shawarma House*
Open to all horse/rider combinations who are not competing in fence heights over 4'

4' JUMPERS: Fence heights 4' *Sponsored by Equitex*
Open to all horse/rider combinations.

2'6" Jackpot Jumper Derby: Fence heights 2'6" *Sponsored by Coventry Realty*
Entries limited to riders not exceeding 2'9" in this show.

Entry Fee: \$50.

\$25 from entry fee will be distributed among 1st through 4th place. (50%, 25%, 15%, 10%) With \$100 in added prize money.

3' Jackpot Jumper Derby: Fence heights 3' *Sponsored by Szura Insurance*
Entries limited to riders not exceeding 3'3" in this show.

Entry Fee: \$80.

\$40 from entry fee will be distributed among 1st through 4th place. (50%, 25%, 15%, 10%) With \$200 in added prize money.

3'6" Jackpot Jumper Derby: Fence heights 3'6" *Sponsored by Matador Farm*
Entries limited to riders not exceeding 3'9" in this show.

Entry Fee: \$120.

\$60 from entry fee will be distributed among 1st through 4th place. (50%, 25%, 15%, 10%) With \$300 in added prize money.

4' Jackpot Jumper Derby: Fence height 4' *Sponsored by Oxford Equine Therapy*
Open to all horses and riders.

Entry Fee: \$170

\$85 from entry fee will be distributed among 1st through 4th place. (50%, 25%, 15%, 10%)
With \$400 in added prize money.

\$1000 Gambler's Choice (August Only): Fences 2'6" – 3" *Sponsored by Milan Equisports*

Riders to choose their own course over a course of jumps with various point values within 60 seconds. Joker fence optional after first round for additional 200 points. Entry Fee: \$75

Prize Money paid as follows: (1st – 30%, 2nd – 25%, 3rd – 15%, 4th – 12.5%, 5th – 10%, 6th – 7.5%)

Leadline & Adult Leadline

Open to any eligible horse and rider. Costumes optional. All proceeds from leadline entry fees go to Banbury Cross Therapeutic Equestrian Center or Detroit Horse Power charities.

Championships:

Championships will be awarded in each Hunter division and each Jumper division.

YEAR END CHAMPIONSHIPS AND HIGH POINTS:

There will be a year-end championship and reserve championship award in each hunter division, jumper division, and equitation division. Year-end high point awards will also be given to top point earner in each medal class, jumper derby and hunter classic.



RATTLEWOOD FARMS HUNTER/JUMPER SHOW SCHEDULE 2 DAY FORMAT **September, October**

SATURDAY VALLEY RING 8:00 AM

100	Warm Up 2'6" (blue/red)
1	Baby Green Hunter 2'6"
2	Baby Green Hunter 2'6" Oxford Veterinary \$100 Stake
250	Mulligan Open Hunter 2'6"
251	Mulligan Open Hunter JB Equest & Redwell \$50 Stake
4	Baby Green Hunter U/S
253	Mulligan Open Hunter U/S
107	Warm Up 2'9" (blue/red)
39	Open Junior/Adult 2'9"
40	Open Junior/Adult 2'9" Equine Laundry \$100 Stake
43	Open Junior/Adult Equitation 2'9"
41	Open Junior/Adult U/S
44	Open Junior/Adult Eq. OTF
108	Warm Up 3' (blue/red)
90	Performance Hunter 3'
91	Performance Hunter 3' Fortner Farms \$125 Stake
93	Performance Hunter U/S
106	Warm Up 2'6" (blue/red)
33	Intermediate Junior/Adult 2'6"
34	Intermediate Junior/Adult 2'6" \$100 Stake
37	Intermediate Junior Adult Equitation O/F
81	Thoroughbred Hunter 2' or 2'6"
82	Thoroughbred Hunter 2' or 2'6"
	Advantage Equine Agency \$75 Stake
84	Thoroughbred Hunter U/S
35	Intermediate Junior/Adult U/S
38	Intermediate Junior/Adult Eq. OTF
105	Warm Up 2'3" (blue/red)
27	Primary Junior/Adult 2'3" O/F
28	Primary Junior/Adult 2'3" O/F Oxford Bank \$75 Stake
31	Primary Junior/Adult Eq. O/F
29	Primary Junior/Adult U/S
32	Primary Junior Adult Eq. OTF
104	Warm Up 2' (blue/red)
21	Beginner Junior/Adult 2' O/F
22	Beginner Jr/Ad 2' O/F TSC \$75 Stake
25	Beginner Junior/Adult Equitation O/F
23	Beginner Junior/Adult U/S
26	Beginner Junior/Adult Eq. OTF

SUNDAY GRASS RING 8:00 AM

103	Warm Up 2' (blue/red)
17	Future Hunters 2'
18	Future Hunters 2' Viers Auto Sales \$75 Stake
20	Future Hunters U/S
102	Warm Up (blue/red)
11	Crosspole O/F
12	Crosspole O/F Complete Automation \$50 Stake
15	Crosspole Equitation O/F
13	Crosspole U/S
16	Crosspole Eq. OTF
101	Warm Up (blue/red)
5	Pole Piles O/F
6	Pole Piles O/F Turtleview Farms \$50 Stake
9	Pole Piles Equitation O/F
7	Pole Piles U/S
10	Pole Piles Eq. OTF
501	Leadline
502	Adult Leadline
500	Rattlewood Farms \$1000 Hunter Classic
150	Beginner 2' Medal
151	Primary 2'3" Medal
152	Intermediate 2'6" Medal
153	Open 2'9" Medal
115	Jumper Warm Up
49	Crosspole Jumpers GreenStone FC \$50 Stake
50	Crosspole Jumpers
116	Jumper Warm Up
53	2' Jumpers Armada Grain \$50 Stake
54	2' Jumpers
117	Jumper Warm Up
57	2'3" Jumpers Moore Equine \$50 Stake
58	2'3" Jumpers
118	Jumper Warm Up
61	2'6" Jumpers Absolute Construction \$50 Stake
62	2'6" Jumpers
119	Jumper Warm Up
65	2'9" Jumpers Thompson's Horseshoeing \$75 Stake
66	2'9" Jumpers
120	Jumper Warm Up
69	3' Jumpers Timber Works Shavings \$75 Stake
70	3' Jumpers
121	Jumper Warm Up
73	3'3" Jumpers HYEED \$75 Stake
74	3'3" Jumpers
122	Jumper Warm Up
77	3'6" Jumpers The Holbrook \$100 Stake
78	3'6" Jumpers
123	Jumper Warm Up
79	3'9" Jumpers Fattoush Bistro & Grille \$100 Stake
80	3'9" Jumpers
124	Jumper Warm Up
95	4' Jumpers Equitex \$100 Stake
96	4' Jumpers
300	2'6" Jackpot Jumper Derby by Coventry Realty
301	3' Jackpot Jumper Derby by Szura Insurance
302	3'6" Jackpot Jumper Derby by Matador Farm

RATTLEWOOD FARM HUNTER/JUMPER SHOW SCHEDULE 3 DAY FORMAT **June 13-15**

FRIDAY 8:00 AM Start

- 100 Warm Up 2'6" (blue/red)
- 1 Baby Green Hunter 2'6"
- 2 Baby Green Hunter Oxford Veterinary \$100 Stake
- 128 Warm Up (Blue/red)
- 250 Mulligan Open Hunter 2'6" O/F
- 251 Mulligan Hunter JB Equest & Redwell \$50 Stake
- 108 Warm Up 3' (blue/red)
- 90 Performance Hunter 3'
- 91 Performance Hunter Fortner Farms \$125 Stake
- 107 Warm Up 2'9" (blue/red)
- 39 Open Junior/Adult 2'9"
- 40 Open Junior/Adult Equine Laundry \$100 Stake
- 42 Open Junior/Adult U/S
- 106 Warm Up 2'6" (blue/red)
- 33 Intermediate Junior/Adult 2'6"
- 34 Intermediate Junior/Adult \$100 Stake
- 81 Thoroughbred Hunter 2' or 2'6"
- 82 Thoroughbred Hunter Advantage Equine \$75 Stake
- 36 Intermediate Junior/Adult U/S
- 105 Warm Up 2'3" (blue/red)
- 27 Primary Junior/Adult 2'3" O/F
- 28 Primary Junior/Adult Oxford Bank \$75 Stake
- 30 Primary Junior/Adult U/S
- 104 Warm Up 2' (blue/red)
- 21 Beginner Junior/Adult 2' O/F
- 22 Beginner Junior/Adult TSC \$75 Stake
- 24 Beginner Junior/Adult U/S
- 103 Warm Up 2' (blue/red)
- 17 Future Hunters 2'
- 18 Future Hunters Viers Auto Sales \$75 Stake
- 102 Warm Up (blue/red)
- 11 Crosspole O/F
- 12 Crosspole O/F Complete Automation \$50 Stake
- 14 Crosspole U/S
- 101 Warm Up (blue/red)
- 5 Pole Piles O/F
- 6 Pole Piles O/F Turtleview Farms \$50 Stake
- 8 Pole Piles U/S

SATURDAY 8:00 AM Start

- 109 Warm Up (blue/red)
- 3 Baby Green Hunter 2'6"
- 4 Baby Green Hunter U/S
- 129 Warm Up (Blue/red)
- 252 Mulligan Open Hunter 2'6" O/F
- 253 Mulligan Open Hunter U/S
- 110 Warm Up (blue/red)
- 92 Performance Hunter 3'
- 93 Performance Hunter U/S
- 111 Warm Up (blue/red)
- 41 Open Junior/Adult 2'9"
- 43 Open Junior/Adult Equitation 2'9"
- 44 Open Junior/Adult Eq. OTF
- 112 Warm Up (blue/red)
- 35 Intermediate Junior/Adult 2'6"
- 37 Intermediate Junior Adult Equitation O/F
- 83 Thoroughbred Hunter 2' or 2'6"
- 38 Intermediate Junior/Adult Eq. OTF
- 84 Thoroughbred Hunter U/S
- 113 Warm Up (blue/red)
- 29 Primary Junior/Adult 2'3"
- 31 Primary Junior/Adult Eq. O/F
- 32 Primary Junior Adult Eq. OTF
- 114 Warm Up (blue/red)
- 23 Beginner Junior/Adult 2' O/F
- 25 Beginner Junior/Adult Equitation O/F
- 26 Beginner Junior/Adult Eq. OTF
- 19 Future Hunters 2'
- 20 Future Hunters U/S
- 116 Warm Up (blue/red)
- 13 Crosspole O/F
- 15 Crosspole Equitation O/F
- 16 Crosspole Eq. OTF
- 117 Warm Up (blue/red)
- 7 Pole Piles O/F
- 9 Pole Piles Equitation O/F
- 10 Pole Piles Eq. OTF
- 601 Leadline
- 602 Adult Leadline

SUNDAY GRASS RING 8:00 AM

- 503 Medal Warm Up
- 150 Beginner 2' Medal
- 151 Primary 2'3" Medal
- 152 Intermediate 2'6" Medal
- 153 Open 2'9" Medal
- 118 Jumper Warm Up B/R
- 49 Crosspole Jumpers Greenstone FC \$50 Stake
- 50 Crosspole Jumpers
- 119 Jumper Warm Up B/R
- 53 2' Jumpers Armada Grain \$50 Stake
- 54 2' Jumpers
- 120 Jumper Warm Up B/R
- 57 2'3" Jumpers Moore Equine 50 Stake
- 58 2'3" Jumpers
- 121 Jumper Warm Up B/R
- 61 2'6" Jumpers Absolute Construction \$50 Stake
- 62 2'6" Jumpers
- 122 Jumper Warm Up B/R
- 65 2'9" Jumpers Thompson's Horseshoeing \$75 Stake
- 66 2'9" Jumpers
- 123 Jumper Warm Up B/R
- 69 3' Jumpers Timber Works \$75 Stake
- 70 3' Jumpers
- 124 Jumper Warm Up B/R
- 73 3'3" Jumpers HYEED \$75 Stake
- 74 3'3" Jumpers
- 125 Jumper Warm Up B/R
- 77 3'6" Jumpers The Holbrook Team \$100 Stake
- 78 3'6" Jumpers
- 500 2'6" Jackpot Jumper Derby - Coventry Realty
- 501 3' Jackpot Jumper Derby - Szura Insurance
- 502 3'6" Jackpot Jumper Derby - Matador Farm

500 Rattlewood Farms \$1000 Hunter Classic

RATTLEWOOD FARMS HUNTER/JUMPER SHOW SCHEDULE 4 DAY FORMAT

July 17-20 & August 14-17 Show Schedule

Thursday: Valley Ring - 8:00am	Friday: Valley Ring - 8:00am	Saturday: Grass Ring - 9:00am	Saturday (con't) Grass Ring - con't'd	Sunday: Grass Ring - 9:00am
Warm-Up 2'6" (blue/red)	Baby Green U/S	Open Jr/Ad Eq OTF	Warm-Up Jumper 3'3"	Medal Warm-Up
Baby Green 2'6"	Mulligan Open Hunter U/S	Warm-Up 2'9" - 2' (blue/red)	3'3" Jumper	Beginner 2' Medal
Baby Green 2'6" \$100 Stake	Warm-Up 2'6" (blue/red)	(open thru all eq)	3'3" Jumper	Primary 2'3" Medal
Mulligan Open Hunter 2'6"	Baby Green 2'6"	Open Jr/Ad Eq 2'9"	Warm-Up Jumper 3'6"	Intermediate 2'6" Medal
Mulligan Open Hunter 2'6" \$50 Stake	Mulligan Open Hunter 2'6"	Intermediate Jr/Ad OTF	3'6" Jumper	Open 2'9" Medal
Warm-Up 3' (blue/red)	Performance Hunter U/S	Intermediate Jr/Ad Eq 2'6"	3'6" Jumper	Warm-Up X-Pole Jumper
Performance Hunter 3'	Warm-Up 3'	Primary Jr/Ad Eq OTF	Warm-Up Jumper 3'9"	Crosspole Jumper \$50 Stake
Performance Hunter 3' \$125 Stake	Performance Hunter 3'	Primary Jr/Ad 2'3"	3'9" Jumper	Crosspole Jumper
Warm-Up 2'9" (blue/red)	Open Jr/Ad Hunter U/S	Beginner Jr/Ad OTF	3'9" Jumper	Warm-Up 2' Jumper
Open Jr/Ad Hunter 2'9"	Warm-Up 2'9" (blue/red)	Beginner Jr/Ad Eq 2'	Warm-Up Jumper 4'	2' Jumper \$50 Stake
Open Jr/Ad Hunter 2'9" \$100 Stake	Open Jr/Ad Hunter 2'9"	Warm-Up X-Pole Jumper	4' Jumper	2' Jumper
Warm-Up 2'6" (blue/red)	Intermediate Jr/Ad Hunter U/S	Crosspole Jumper	4' Jumper	Warm-Up Jumper 2'3"
Intermediate Jr/Ad Hunter 2'6"	Warm-Up 2'6" or 2' (blue/red)	Crosspole Jumper		2'3" Jumper \$50 Stake
Intermediate Jr/Ad Hunter 2'6" \$75 Stake	Intermediate Jr/Ad Hunter 2'6"	Warm-Up 2' Jumper		2'3" Jumper
TB Hunter 2'6" or 2'	TB Hunter 2'6" or 2'	2' Jumper	Saturday: Grass Ring - After Regular Classes	Warm-Up Jumper 2'6"
TB Hunter 2'6" or 2' \$75 Stake	TB Hunter U/S	2' Jumper		2'6" Jumper \$75 Stake
Warm-Up 2'3" (blue/red)	Primary Jr/Ad Hunter U/S	Warm-Up Jumper 2'3"	2'6" Jackpot Jumper Derby	2'6" Jumper
Primary Jr/Ad Hunter 2'3"	Warm-Up 2'3" (blue/red)	2'3" Jumper	3' Jackpot Jumper Derby	Warm-Up Jumper 2'9"
Primary Jr/Ad Hunter 2'3" \$75 Stake	Primary Jr/Ad Hunter 2'3"	2'3" Jumper	3'6" Jackpot Jumper Derby	2'9" Jumper \$75 Stake
Warm-Up 2' (blue/red)	Beginner Jr/Ad Hunter U/S	Warm-Up Jumper 2'6"		2'9" Jumper
Future Hunter 2'	Warm-Up 2' (blue/red)	2'6" Jumper		Warm-Up Jumper 3'
Future Hunters 2' \$75 Stake	Beginner Jr/Ad Hunter 2'	2'6" Jumper		3' Jumper \$100 Stake
Beginner Jr/Ad Hunter 2'	Future Hunter 2'	Warm-Up Jumper 2'9"		3' Jumper
Beginner Jr/Ad Hunter 2' \$50 Stake	Future Hunter U/S	2'9" Jumper		Warm-Up Jumper 3'3"
Crosspole Jr/Ad U/S	Crosspole Jr/Ad OTF	2'9" Jumper		3'3" Jumper \$100 Stake
Warm-Up X-Pole (blue/red)	Warm-Up X-Pole (blue/red)	Warm-Up Jumper 3'		3'3" Jumper
Crosspole Jr/Ad Hunter 18"	Crosspole Jr/Ad Eq 18"			Warm-Up Jumper 3'6"
Crosspole Jr/Ad Hunter 18" \$50 Stake	Pole Pile Jr/Ad OTF	3' Jumper		3'6" Jumper \$100 Stake
Pole Pile Jr/Ad U/S	Warm-Up Pole Piles (blue/red)	3' Jumper		3'6" Jumper
Warm-Up Pole Piles (blue/red)	Pole Piles Jr/Ad Eq			Warm-Up Jumper 3'9"
Pole Piles Jr/Ad Hunter				3'9" Jumper \$125 Stake
Pole Piles Jr/Ad Hunter \$50 Stake				3'9" Jumper
				Warm-Up Jumper 4'
				4' Jumper \$125 Stake
				4' Jumper

Rattlewood Farms \$1000 Hunter Classic

*Management reserves the right to move
Hunter Classic to Friday nite if needed

Milan Equisports \$1000 Gambler's Choice (August only)

*Management reserves the right to move
Gambler's Choice to Saturday nite if needed

Dressage at Rattlewood Hosted by Matador Farm

Enter at www.showsecretary.com

Online entries close two weeks prior to show.

Late fees apply to entries received after the closing date.

Payments can be made via credit card

at www.showsecretary.com or by check payable to Matador Farm.

Each day is a separate show, and scores count toward MDA and ADA year end awards.

High Score Awards are provided by division for each show, with cash paybacks for Intro Level, Training Level and First Level thanks to our generous sponsors!

SHOW DATES	SHOW NAMES	JUDGE	OPEN DATE	CLOSE DATE
Saturday, May 17, 2025	Rattlewood 1	Erin McElmurray	04/07/25	05/04/25
Sunday, May 18, 2025	Rattlewood 2	Dorothy Mueller		
Saturday, June 28, 2025	Rattlewood 3	Leah Majkrzak	05/19/25	06/15/25
Sunday, June 29, 2025	Rattlewood 4	Glenda Warner		
Saturday, July 19, 2025	Rattlewood 5	Erin McElmurray	06/09/25	07/06/25
Sunday, July 20, 2025	Rattlewood 6	Sheri Wolke Masi		
Saturday, August 16, 2025	Rattlewood 7	Bernadette Radke	07/07/25	08/03/25
Sunday, August 17, 2025	Rattlewood 8	Glenda Warner		
Saturday, September 27, 2025	Rattlewood 9	Stephanie Likens	08/18/25	09/14/25
Sunday, September 28, 2025	Rattlewood 10	Sheri Wolke Masi		

Entry Fees:

Dressage tests, all levels- \$25.00

Saturday Night Freestyle with cash paybacks offered at May, June and July shows.

May – entry fee \$25, payout total \$500

June – entry fee \$35, payout total \$750

July – entry fee \$45, payout total \$1,000

Horse Show Fees:

Office Fee, per day- \$30.00

Stall (horse or tack)- \$150

Grounds Fee- \$40.00

Non-Compete Fee- \$30

Late Entry Fee- \$30.00

Shavings- \$10.00/bag

Changes requested AFTER closing date - \$10 per change

STALL RESERVATIONS

Stall reservations must be made by calling or texting Jessica Filiatrault at 512-585-4048. STALLS ARE LIMITED. Reservations need to be made at least two weeks before the start of the show. Stall fees are \$150.00 per horse or tack stall. Stalls cancelled less than 2 weeks prior to show start will still be charged. Add your stall when you enter at www.showsecretary.com.

GROUND/HAUL IN RESERVATIONS

Grounds and haul in reservations must be made by calling or texting Jessica Filiatrault at 512-585-4048. Grounds fee is \$40.00 per horse.

GOLF CART RENTALS

Golf carts can be reserved for your stay at Rattlewood Farms by calling Viers Auto Sales at 810-667-5447 or by e-mail at erin@viersautosales.com. Supply is limited so we suggest you call to make your reservation as soon as possible.





**Harness Your
Equestrian
Experience:
Helping Kids Ride**

Saddle Up for Success with the
Four County Community
Foundation!

<https://www.4ccf.org>

Sponsored by :
Anne & Leon
LaBrecque



The 'Harness Your Equestrian Experience' Fund will provide a \$500 scholarship to equestrians who show exemplary character, diligence and academic achievement and wish to pursue their sport. This fund was established by Anne and Leon LaBrecque through the Four County Community Foundation. The fund is open to Western or English Riders.

Application requirements:

- An informal biography of the candidate and their riding experience, in the form of a request letter by the candidate. Or nominations by trainer/coach.
- Evidence of their GPA
- The future pursuit of equestrian sport by the candidate (i.e. college, competitions)
- A letter from the coach or trainer detailing why the candidate possess the character, diligence and necessary intention.

Applications due by October 15 and can be emailed to:
annelabrecque1@mac.com



RED WELL
FARM

Boarding, Training and Sales-850-572-4894

JB Equest





COMPLETE

COMPANIES

One Team Creating Complete Solutions





COMPLETE COMPLETE COMPLETE





AUTOMATION FILTRATION METAL FINISHING

1776 W. Clarkston Rd., Lake Orion, MI 48362 📞 (248) 693-0500 🌐 www.completeco.com




CHOICE THERAPEUTICS

Fascia Stretch Therapy™ (FST)

The GOLD STANDARD of **pain-free** assisted stretching that focuses on pain relief and improved mobility for quality of life.

Services also offered:

- Sports Massage
- Lymphatic Drainage
- Therapeutic Massage








248-619-5934 53 S. Washington Oxford, MI 48371 www.vagaro.com/choice



**Dream Big Farm
Goodrich, Mi**



**MOORE
EQUINE**
VETERINARY SERVICES

*Providing knowledgeable,
compassionate care for your equine
companion*

(248) 653-8766

Based out of Oxford, MI

Servicing the Metamora, Lapeer, Dryden,
and Macomb areas

Offering general and specialized care for
all equines including vaccinations, dental
care, lameness workups and emergency



Cedarwood Farm

248-969-6900

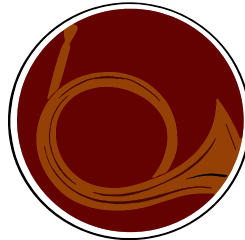


DON'S LIL JOHNS

PORTA-JOHNS & SEPTIC PUMPING



**THOMPSON'S
HORSESHOEING
INC.**



Coventry Realty, LLC

Carole Porretta, Broker/Owner

810-678-2288





Sporthorse Saddlery





Michael S. Young
REALTOR®

1520 S. Lapeer Rd. Ste 105
Lake Orion, MI 48360

Cell 810-656-6095
MichaelYoungRE@gmail.com
Search www.MichaelYoungRE.com



♦ **FATTOUSH** ♦

Bistro & Grill

 **MEDITERRANEAN CUISINE** 

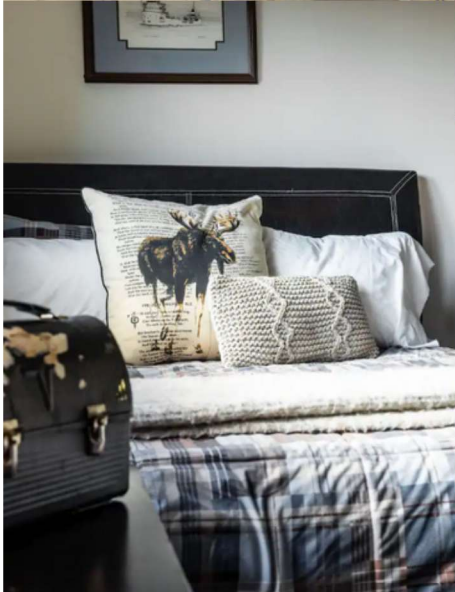


AEA
Advantage Equine Agency, Inc.
248-650-7732
www.advantageequine.com



OXFORD
EQUINE THERAPY





LOOKING FOR LODGING?


STAY AT



LOCATED IN METAMORA HORSE COUNTRY, ONLY 10
MINUTES AWAY FROM THE HISTORIC WHITE HORSE INN


SCAN TO BOOK






**140 Years
of Valuing
our Team and Clients**

www.oxfordbank.bank

 Member
FDIC



ABSOLUTE CONSTRUCTION
PREMIUM EQUESTRIAN BUILDERS

(248) 431-8339
View our project gallery online:
www.absoluteconstructionllc.com



Your shield.
Protecting what matters most.

Szura Insurance: Experience. Integrity. Results.

For over 35 years, Szura Insurance has delivered trusted, tailored solutions for individuals and businesses alike. As an independent agency, we offer a wide range of personal and commercial plans designed to fit your exact needs and budget.

WHY CHOOSE SZURA?

- ✓ Personalized Coverage
- ✓ Expert Guidance
- ✓ Cost-effective Options
- ✓ Customer-first Approach

With Szura, you're not just getting coverage—you're gaining a partner. Your dedicated agent and account manager work as your advocates, helping protect what matters most with care, clarity, and confidence.

Szura Insurance. 

OUR SERVICES

COMMERCIAL

- Workers' Compensation
- Commercial Umbrella
 - Commercial Auto
 - General Liability
 - Bonds

PERSONAL

- Personal Insurance
- Asset Protection
- Life

BENEFITS

- Long-Term Care Insurance
- Disability Insurance
- Health Insurance



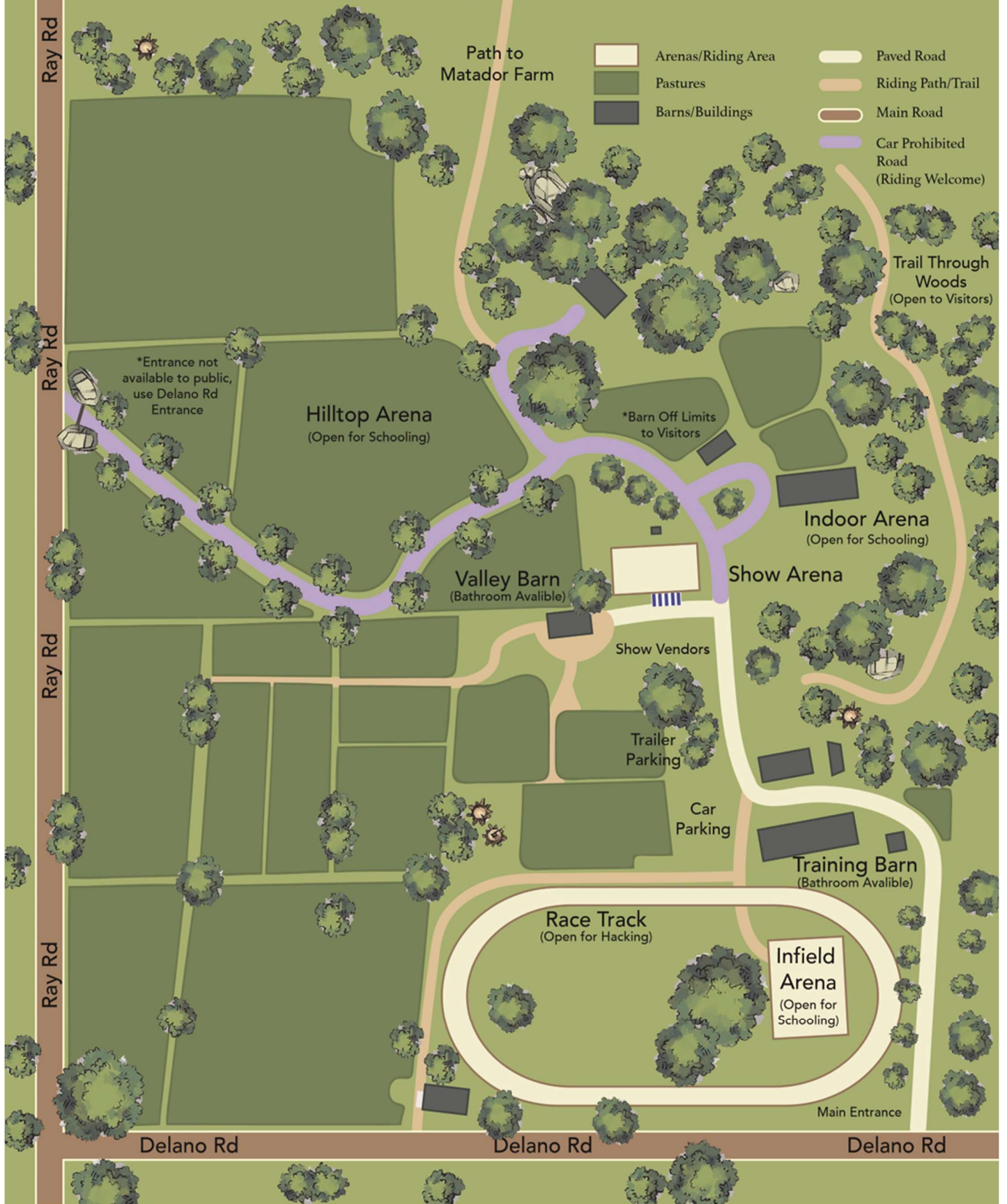
 [szuraagency.com](https://www.szuraagency.com)

 info@szuraagency.com

 (248) 651-4487

Smart coverage. Proven service. Real peace of mind.

Rattlewood Farms Map





The Rattlewood Farms 2025 Horse Show Series

May 17-18	Dressage I
Jun 13-15	Hunter/Jumper I
Jun 28-29	Dressage II
July 17-20	Rattlewood Equestrian Festival Hunter/Jumper II & Dressage III
Aug 14-17	Rattlewood Sporthorse Classic Hunter/Jumper III & Dressage IV
Sept 13-14	Hunter/Jumper IV
Sept 27-28	Dressage V
Oct 11-12	Hunter/Jumper V
Nov 8	Rattlewood Farms Awards Gala

Rattlewood Farms
1785 Delano Road
Oxford, Michigan 48371